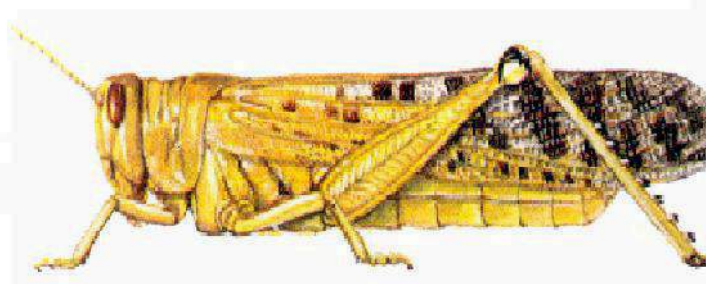


**FEDERAL DEMOCRATIC REPUBLIC OF
ETHIOPIA**

**MINISTRY OF AGRICULTURE
Plant Health Regulatory Directorate**

LOCUST INFORMATION OFFICE



DESERT LOCUST BULLETIN FEBRUARY 2016

ISSUE NO. 121

Tel: 011 6461147

Fax: 011-6 - 4 6 11 47

**e-mail: hiwot.lemma@ymail.com, ghibefi@gmail.com,
solomonmirete7@gmail.com**

Introduction

In February, Desert Locust situation remained calm throughout Ethiopia. Survey was not conducted, however information from DL scouts indicates absence of Desert Locust activities in spring breeding areas of Eastern Ethiopia. Rainfall was not started in Eastern Ethiopia as result annual, perennial vegetations and the soil were dry. In general similar to previous months the conditions were not favorable to Desert locust breeding throughout the month.

Ecological conditions

Vegetation status – Generally the annual and perennial vegetation appears dry in which desert locust spring breeding is used to take place.

Temperature – The temperature has increased and sunny weather conditions prevailed in most part of the country including desert locust spring breeding areas.

Rainfall – No rainfall was fallen in desert locust spring breeding areas throughout the month.

Desert Locust Situation-

The locust situation remained calm during the month of February in spring breeding areas.

Forecasting

The desert locust status in Ethiopia expected to remain calm in March too. However, close monitoring of the situation is required particularly in the spring Breeding areas.

OVERVIEW OF SURVEY AND CONTROL CAPACITY IN ETHIOPIA

Two 4WD pickup vehicles are available for regular locust operation.

Sprayers available in central store (Addis Ababa):

- Mist blower AU 8000 - 36
- Spinning disk - 170
- Vehicle mounted sprayers - 8
- E-Pesticide loading pumps - 12

Pesticides available in central store (Addis Ababa)

- ULV - 1000 lit.
- EC - 14,000 lit.

Pesticides available in central store (Dire Dawa and Somali Admin.Regions)

- ULV - 120 lit.

Survey and Communication equipments available in locust unit (Addis Ababa):-

- e Locust 2 - 6 – 2 of them are in the Regions.
- eLocust 3 - 5
- Tachometer - 24
- GPS - 26
- Compass - 6
- Anemometer - 6
- Stop watch - 6

Staff composition

In the Plant Health Regulatory Directorate of the Ministry of Agriculture, the migratory pests monitoring and control section is composed of:-

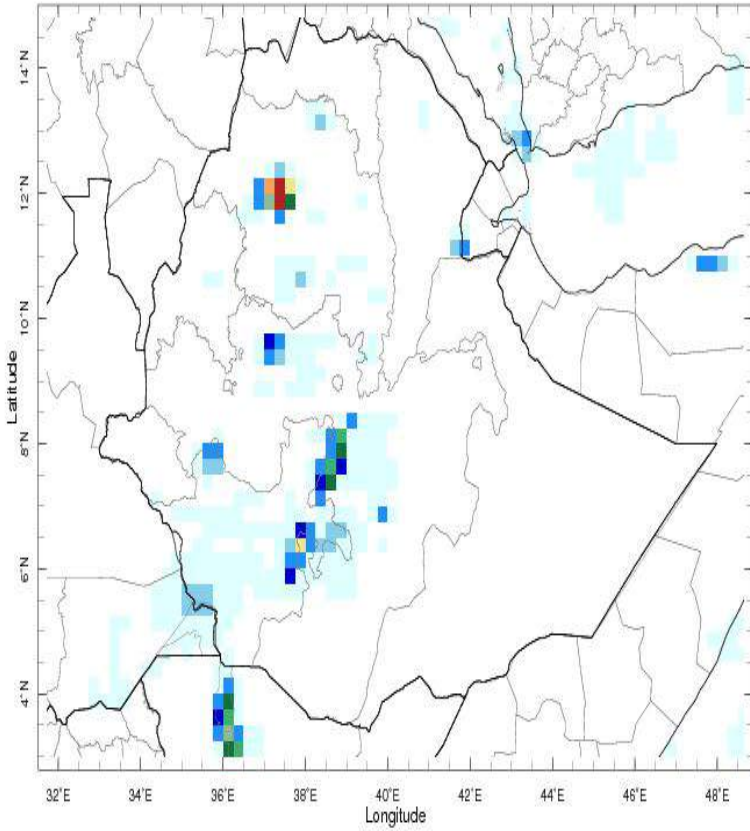
- 5 entomologists (two of them are locust officers) and 1 pesticide and sprayers use
- At Regional Administrative level
- Plant Health Clinics (16 PHCs) -15 crop protection experts among these 6 are Locust Focal Persons and 5 more technicians
- 26 Scouts (at locust prone districts)

DISTRIBUTION LIST

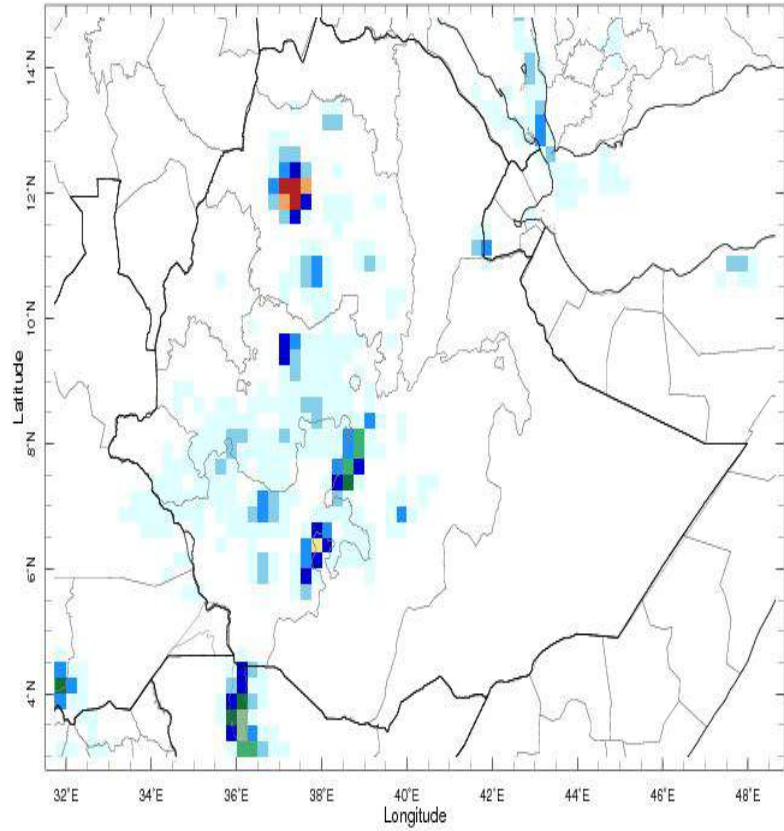
This bulletin is distributed to the following:-

- DLIS -Rome
- CRC-EMPRES/CR
- Ministry of Agriculture, Ethiopia
- Regional Bureaus of Agriculture
- WFP - Ethiopia
- Neighboring countries (Sudan, Eritrea, Yemen, Egypt, Oman, Djibouti, Somalia, Saudi Arabia etc).
- FAO - Ethiopia
- UNDP - Ethiopia
- USAID - Ethiopia
- USAID/OFDA – USA
- DLCO-EA

Rainfall Estimates for 1st and 2nd decades of February 2016 in Ethiopia



1-10 Feb 2016



11-20 Feb 2016



Estimated Dekadal Precipitation [mm]